



Cyclone

INDUSTRIAL
FENCES

THE **Cyclone** FENCE AND GATE COMPANY LTD.
CHRISTCHURCH ASHBURTON TIMARU DUNEDIN INVERCARGILL

CYCLONE FENCES

For

INDUSTRIAL, MUNICIPAL

And

COMMERCIAL INSTALLATIONS.

Cyclone

INTRODUCTION.

THIS BROCHURE IS EXPRESSLY DESIGNED TO ANSWER YOUR QUESTIONS CONCERNING THE USES OF CYCLONE INDUSTRIAL AND SAFETY FENCES. ILLUSTRATIONS OF ACTUAL INSTALLATIONS WILL GIVE YOU SOME IDEA OF THE CLEAN, ATTRACTIVE, LONG LIFE APPEARANCE OF THESE CYCLONE FENCES AND GATES, AND ASSIST YOU IN SELECTING THE TYPE OF FENCE BEST SUITED FOR YOUR JOB.

IF YOU REQUIRE ADDITIONAL INFORMATION, THIS WILL BE WILLINGLY SUPPLIED BY ANY OF OUR REPRESENTATIVES IN AUCKLAND, HASTINGS, FIELDING, MASTERTON, CHRISTCHURCH, ASHBURTON, TIMARU, DUNEDIN AND INVERCARGILL.

CYCLONE INDUSTRIAL FENCES ARE MADE FROM FULLY GALVANISED CHAIN LINK NETTING AND ALL FITTINGS ARE **HOT** DIPPED GALVANISED AFTER MANUFACTURE.

THE TERM FULLY GALVANISED MEANS COATED TO A BRITISH STANDARD OF .95 OZS. PER SQ. INCH FOR 8 GAUGE AND MUST NOT BE CONFUSED WITH VAGUE TERMS SUCH AS HEAVILY GALVANISED WHICH MEAN NOTHING.

FOR INSTALLATION NEAR THE SEA OR WHERE ATMOSPHERIC POLLUTION IS SEVERE WE STRONGLY RECOMMEND CYCLONE PLASTIC COATED CHAIN LINK NETTING WHICH HAS AT LEAST TEN, POSSIBLY TWENTY TIMES THE LIFE OF EVEN THE BEST GALVANISED WIRE.

TO MEET YOUR PRECISE REQUIREMENTS CYCLONE INDUSTRIAL FENCES ARE SUPPLIED IN VARIOUS STYLES, HEIGHTS AND GAUGES WHICH WILL OFFER THE STURDIEST RESISTANCE TO INTRUDERS AND THE BEST PROTECTION FOR YOUR PROPERTY.

Cyclone

WHAT DO YOU REQUIRE OF YOUR FENCE?

PERHAPS YOU ARE INTERESTED ONLY IN MAXIMUM SECURITY OR MAYBE YOU REQUIRE A FENCE WHICH, WHILE GIVING PROTECTION ALSO ENHANCES THE APPEARANCE OF YOUR PROPERTY.

A GLANCE AT THE FOLLOWING PAGES WILL CONVINCING YOU THAT CYCLONE INDUSTRIAL AND PROTECTIVE FENCES HAVE ALL THE PROPERTIES YOU REQUIRE:- STRENGTH - LONG, MAINTENANCE FREE LIFE, AND BEAUTY OF LINE, WHILE GIVING THAT CONSTANT PROTECTION YOUR PROPERTY NEEDS.

IF YOU OPERATE A COMMERCIAL OR INDUSTRIAL ESTABLISHMENT YOU WILL NO DOUBT BE LOOKING FOR MAXIMUM SECURITY AGAINST UNDESIRABLE TRESPASSERS, MALICIOUS VANDALS ETC., BUT IN ADDITION THERE IS AN OBLIGATION TO PROTECT A CARELESS PUBLIC FROM COMING IN CONTACT WITH POTENTIALLY HAZARDOUS EQUIPMENT OR DANGER AREAS. CYCLONE CAN SUPPLY A FENCE TO FIT THESE REQUIREMENTS.

ENGINEERS AND PURCHASING OFFICERS FOR LOCAL BODIES ARE FREQUENTLY CALLED ON TO MAKE DECISIONS REGARDING PROTECTIVE FENCES FOR THE PUBLIC AT SCHOOLS, PARKS, AMUSEMENTS AREAS, PARKING LOTS. LET CYCLONE ASSIST YOU IN MAKING THE BEST USE OF PUBLIC FUNDS BY SUBMITTING A QUOTATION FOR A CYCLONE FENCE, BECAUSE PROPERLY INSTALLED FENCING PLAYS AN IMPORTANT PART IN HANDLING LARGE CROWDS, CONTROLLING TRAFFIC AND CHANNELING PEOPLE THROUGH ENTRANCES AND EXITS THEY SHOULD USE FOR MAXIMUM CONVENIENCE AND SAFETY.

Cyclone

WHEN FACED WITH THE PROBLEM OF WHAT TYPE OF PROTECTION YOU WILL CHOOSE FOR YOUR PROPERTY.

CONSIDER THESE IMPORTANT FACTS:-

- * HEAVY GRADE GALVANISED POSTS.
- * HEAVY GAUGE FULLY GALVANISED OR PLASTIC COVERED CHAIN LINK NETTING.
- * HEAVY GAUGE SPIRALLED GALVANISED WIRES STRAINED TOP, BOTTOM AND CENTRE OF FENCE.
- * ALL FITTINGS HOT DIP GALVANISED AFTER MANUFACTURE OR MADE FROM GALVANISED MATERIAL.
- * ALL WELDS TREATED WITH A ZINC RICH PREPARATION, PRIOR TO RECEIVING FINISHING COAT OF PAINT.
- * PATENTED ADJUSTABLE WIRE TENSIONERS ON TOP, MIDDLE AND BOTTOM SUPPORT WIRES.
- * ADJUSTABLE TENSION STAYS ON ALL GATES WITH PATENTED CYCLONE TURNBUCKLE. ALSO AT TERMINAL POSTS AND CHANGES OF DIRECTION.
- * SPUN METAL GALVANISED POST CAPS.

FURTHER DETAILS WILL BE GLADLY SUPPLIED ON REQUEST OR IF YOU PREFER, A CYCLONE REPRESENTATIVE WILL CALL, MEASURE YOUR PROPERTY AND COMPILE DATA NECESSARY FOR BUILDING AND INSTALLING YOUR FENCE.

Cyclone

CYCLONE SAFETY FENCE

SPECIFICATIONS.

POSTS	2 INCH I. D. GALVANISED PIPE.
NETTING	2 INCH X 10 GAUGE FULLY GALVANISED CHAIN LINK NETTING.
TRUSSES	1 $\frac{1}{4}$ INCH I. D. GALVANISED PIPE. FOR TERMINAL POSTS AND DIRECTION CHANGES.
TOP AND BOTTOM	6 GAUGE SPIRALLED WIRE.



THE STANDARD CYCLONE SAFETY FENCE AS ILLUSTRATED DOES NOT HAVE A TOP OR BOTTOM RAIL. IN ADDITION TO REDUCING COSTS VERY CONSIDERABLY THE MAIN REASON IS THAT THE ABSENCE OF A TOP RAIL IS A MAJOR FACTOR IN MAKING THE FENCE DIFFICULT TO SCALE. THE 6 GAUGE SPIRALLED WIRE INTRODUCED BY CYCLONE STRAINED TIGHT GIVES AMPLE VERTICAL

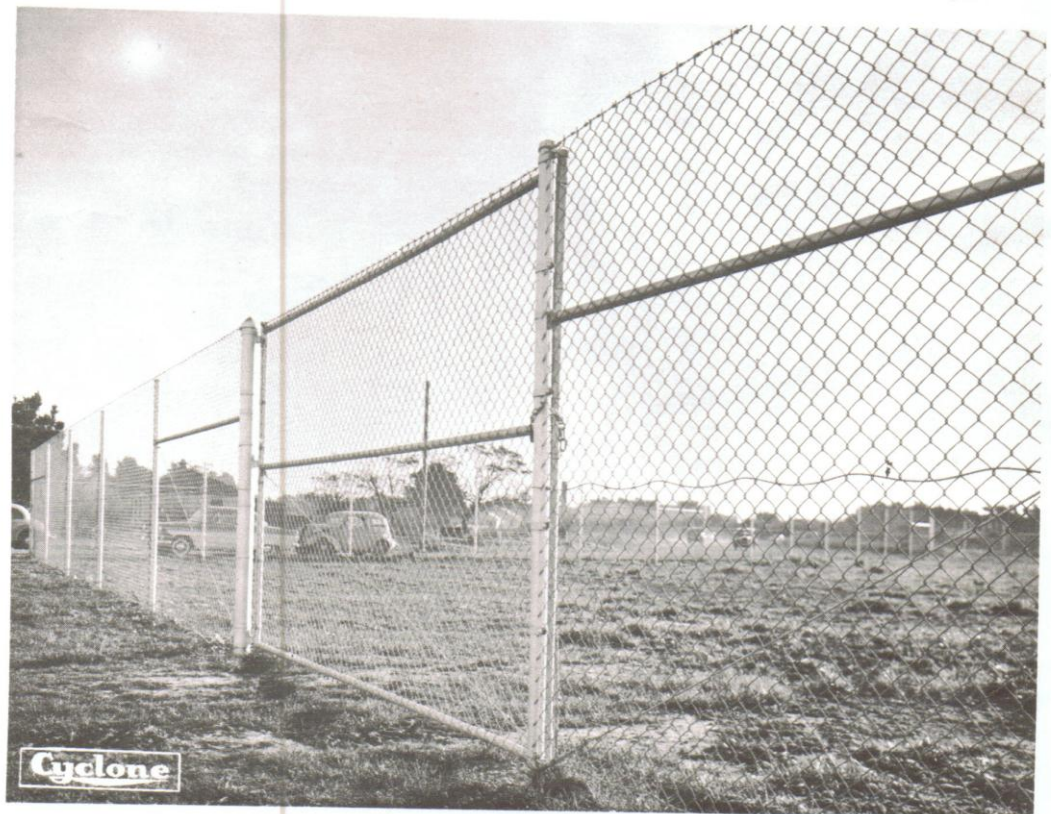
SUPPORT FOR THE NETTING AND THIS STRAIN IS MAINTAINED BY PATENTED STRAINERS AT EACH TERMINAL POST OR CHANGE OF DIRECTION POST. THE SPIRALLED WIRES SUPPORTING THE NETTING HAVE THE ABILITY TO ABSORB EXPANSION AND CONTRACTIONS WITHOUT LOOSING TENSION.

GATES.

THESE IN KEEPING WITH THE GENERAL LINES OF THE FENCE ARE A HIGH QUALITY HEAVYWEIGHT JOB IN DESIGNING WHICH LONG LIFE AND RUGGEDNESS HAVE BEEN THE FIRST CONSIDERATION.

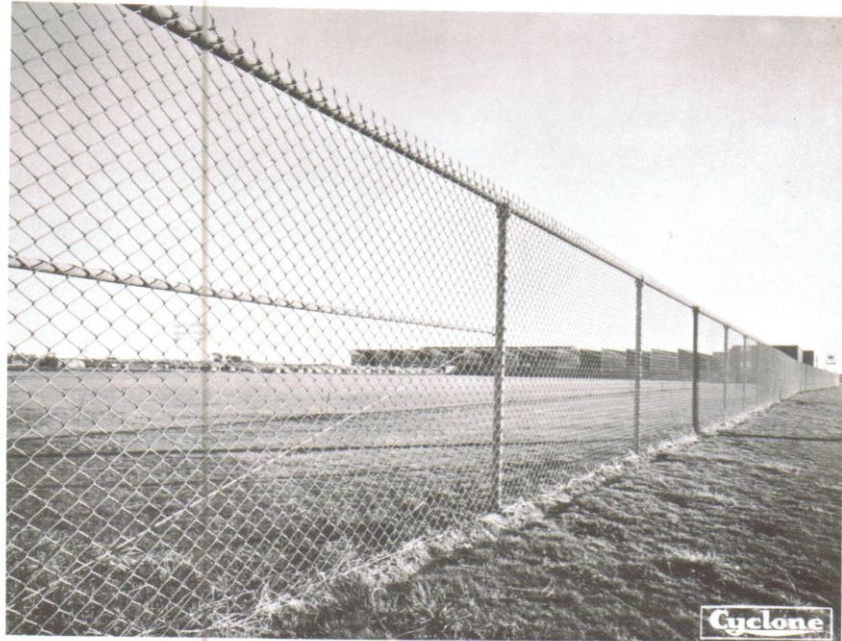
SPECIFICATIONS

FRAME	1 ½ INCH I. D. GALV. PIPE STILES 1 ¼ INCH GALV. PIPE RAILS AND STAYS.
COVERING	2 INCH X 10 GAUGE FULLY GALVANISED CHAIN LINK NETTING.
LUGS	PRESSED FROM 2'X ½" F. M. S. AND HOT DIP GALVANISED.



INDUSTRIAL PROTECTIVE
FENCE WITH TOP RAIL

SOME CLIENTS STATE A PREFERENCE FOR A TOP RAIL ON THEIR FENCE AND FOR THOSE WHO MAY CONSIDER THIS AN ADVANTAGE WE OFFER THESE PHOTOGRAPHS OF RECENT INSTALLATIONS FOR THEIR GUIDANCE.

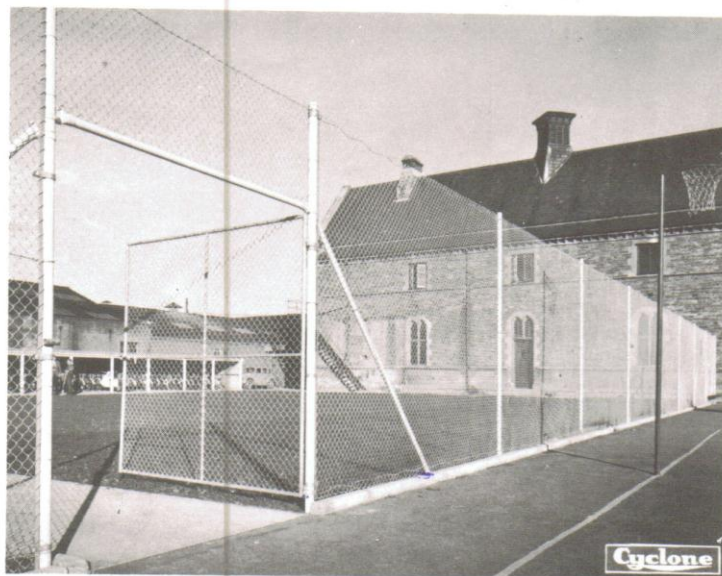
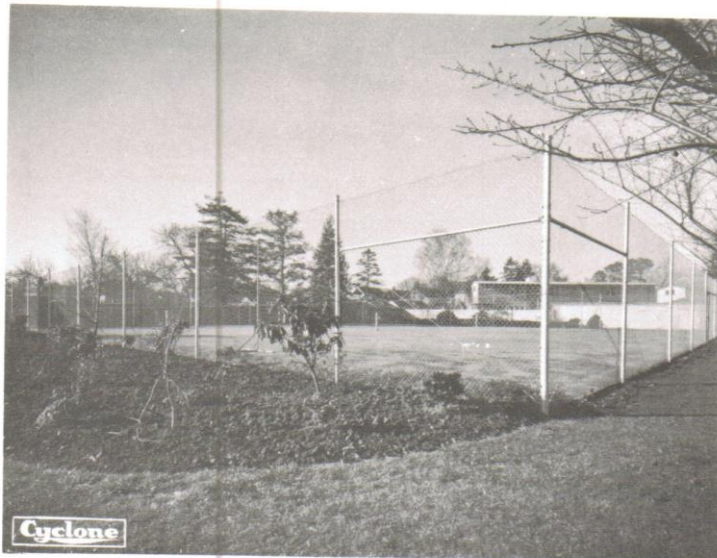


CYCLONE TENNIS COURT
ENCLOSURES.

THESE STURDY LONG LIFE ENCLOSURES ARE IN USE IN
MANY PLACES THROUGHOUT THE COUNTRY.

THEY ARE NOT EXPENSIVE WHEN THEIR DURABILITY
AND HARD WEARING QUALITIES ARE COMPARED WITH
THE FLIMSINESS OF MORE COMMONPLACE STRUCTURES.

AGAIN WE RECOMMEND PLASTIC COATED CHAIN FOR
ITS ATTRACTIVENESS AND ALMOST INDEFINITE LIFE.



PARK FENCE

WHEREVER THE ABSOLUTE DEGREE OF PROTECTION IS NOT VITAL BUT APPEARANCE IS IMPORTANT, CYCLONE PARK FENCE IS YOUR ANSWER.

WHERE BLACK OR GREEN PLASTIC COATED CHAIN LINK NETTING IS USED THE EFFECT IS MOST ATTRACTIVE. SPECIFICATION IS AS FOR SAFETY FENCE BUT HEIGHT IS GENERALLY 4 FEET 6 INCHES.

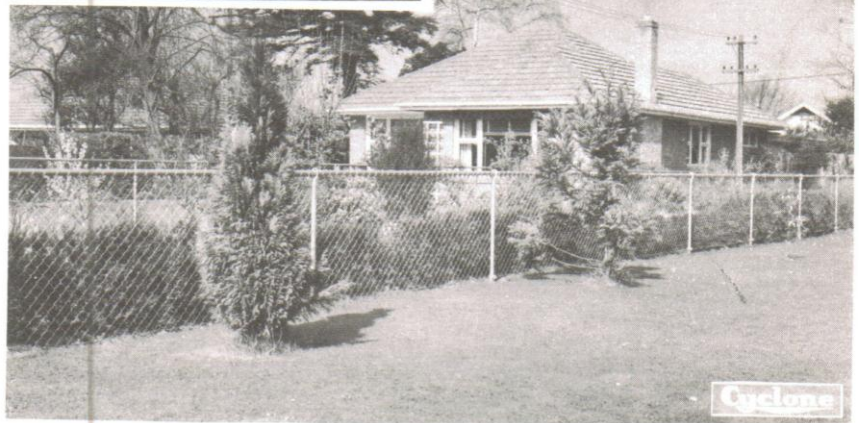


K.D. RESIDENTIAL FENCE.

THIS FENCE IS ABSOLUTELY IDEAL FOR MANY JOBS WHERE A LOW FENCE IS CALLED FOR. STREET FENCES - DIVIDING FENCES - PROTECTION FOR GARDEN PLOTS. AVAILABLE AT A VERY REASONABLE PRICE IN "KIT SET" FORM READY TO ERECT THIS IS THE BEST VALUE OF ITS KIND IN NEW ZEALAND.

STANDARD K.D. FENCE IS MANUFACTURED FROM GALVANISED MATERIAL AND FITTINGS ARE HOT DIP GALVANISED.

A VERY PLEASING RANGE OF COLOURS IN PLASTIC COATED K.D. FENCE IS ALSO AVAILABLE.



CYCLONE ENCLOSURES.

MANY AND VARIED ARE THE USES TO WHICH CYCLONE
TUBE AND WIRE PRODUCTS ARE PUT.

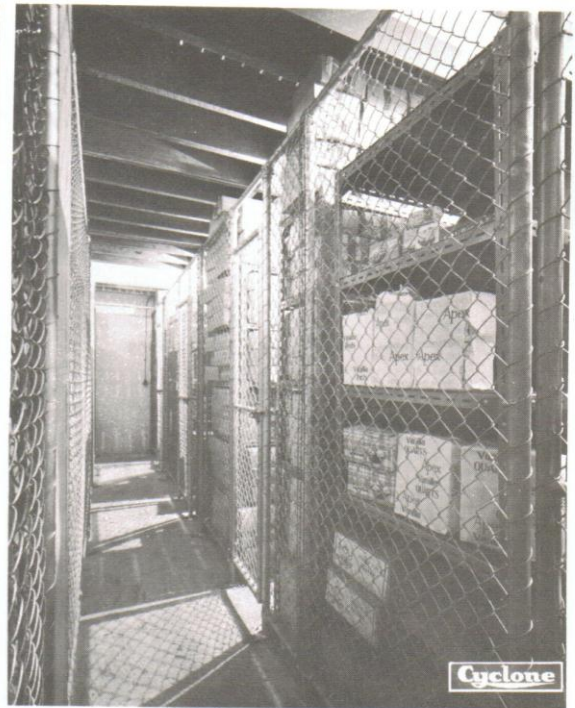
THE FOLLOWING PHOTOGRAPHS ILLUSTRATE BETTER
THAN WORDS SOME OF THESE APPLICATIONS.



FACTORY PARTITIONS

STORE ROOM DIVISIONS

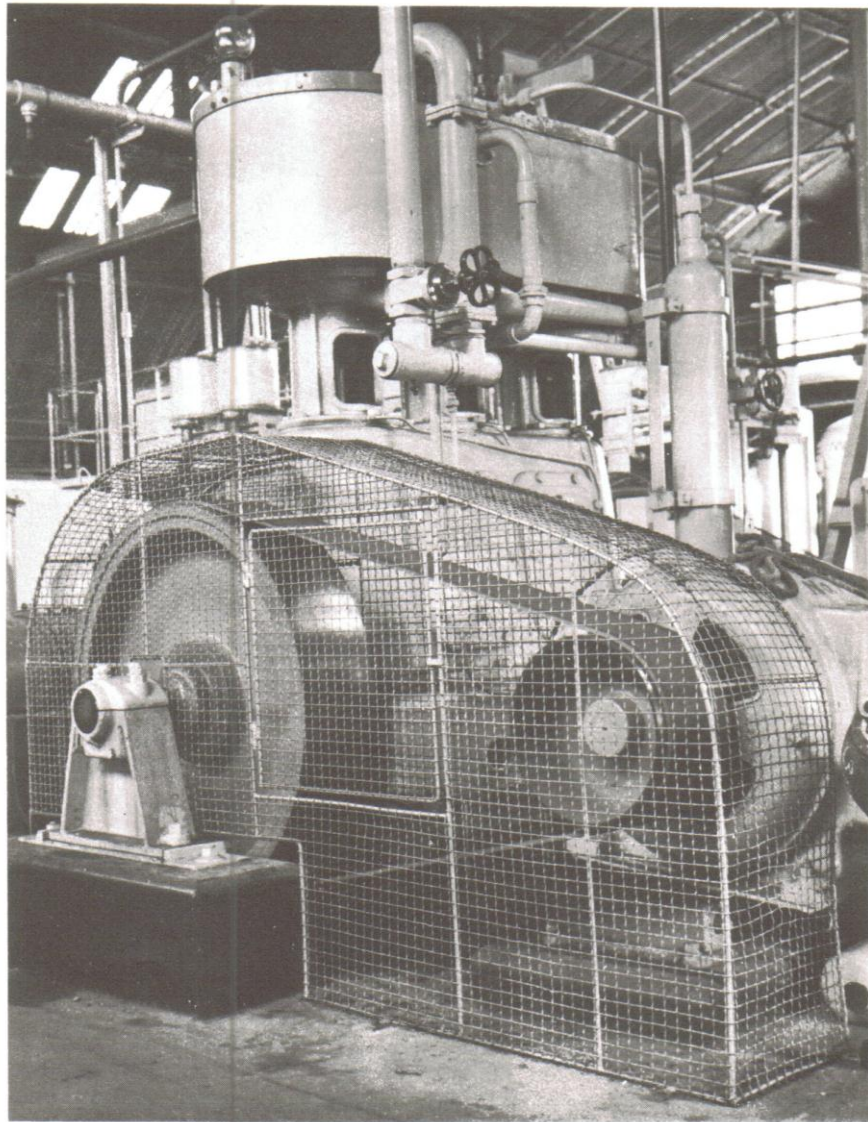
THERE ARE FREQUENT OCCASIONS WHEN IT IS NECESSARY TO DIVIDE A STORE ROOM OR ISOLATE A SECTION OF A FACTORY WITHOUT RESTRICTING AIR CIRCULATION OR VISIBILITY - WHAT COULD SERVE YOUR PURPOSE BETTER THAN CYCLONE INDUSTRIAL PARTITIONS.

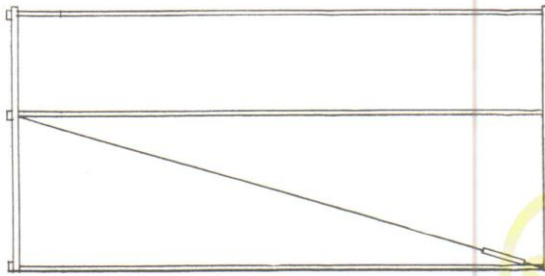


MACHINE GUARDS

THESE ARE REQUIRED BY LAW BUT IN MANY INSTANCES WE HAVE SEEN UNSIGHTLY COVERS AND GUARDS WHICH ARE AN EYESORE AND DO NOT PERMIT EASY ACCESS FOR SERVICING THE MACHINERY THEY ARE COVERING.

BESIDES FULFILLING REQUIREMENTS AS LAID DOWN IN THE MACHINERY ACT 1950, CYCLONE GUARDS ARE PLEASING TO THE EYE AND BLEND WELL WITH ALL FACTORY CONDITIONS.

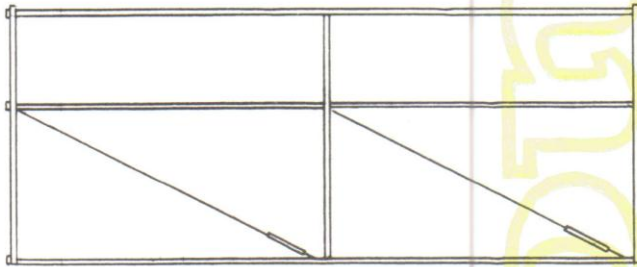




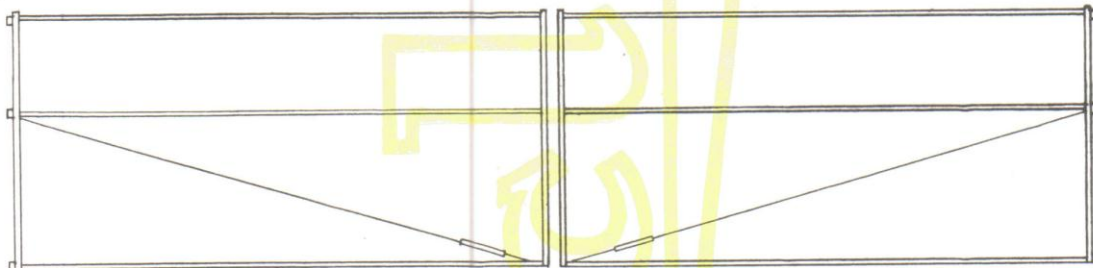
UP TO 12'-0" OPENING

Gates for security and unscale-able fences are made with stiles and barbed wire to match. If required a wicket gate fitted with a Yale Lock can also be supplied

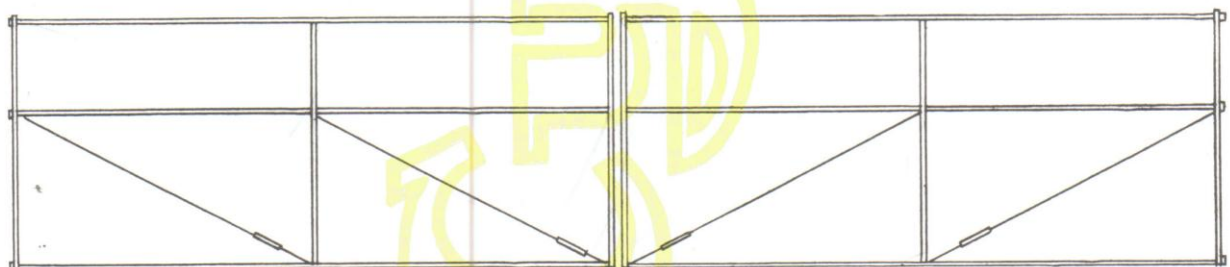
All gates are covered with 2"x10g. netting unless other-
wise stated.



12'-0" & OVER OPENING



UP TO 24'-0" OPENING



24'-0" & OVER OPENING

INDUSTRIAL GATES



TERMINAL POST

- 1 post cap
- 3 wire strainers
- 6 offset bands for netting strainer bar
- 2 centre bands for brace fittings.



CORNER POST

- 1 post cap
- 12 offset bands for netting strainer bar
- 4 centre bands for brace fittings.



INTERMEDIATE POST

- 1 post cap
- 1 split selvage clip for spiral wire along bottom.



HANGING POST

- Normally 3", 4" or 6" pipe
- 6 offset bands for netting strainer bar
- 2 centre bands for brace fittings
- 3 gudgeons for hanging gate
- 1 post cap.



LOCKING POST

- Maybe 3" 4" or 6" pipe to match the hanging post
- 6 offset bands for netting strainer bar
- 1 centre band for brace fittings.
- 1 post cap.

LEGEND

- wire strainer
- centre band
- offset band

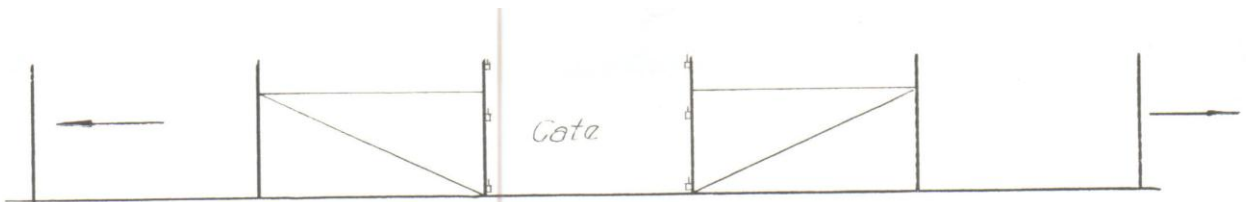
- x-x split selvage clip
- △ post cap
- gudgeon



BRACE POST

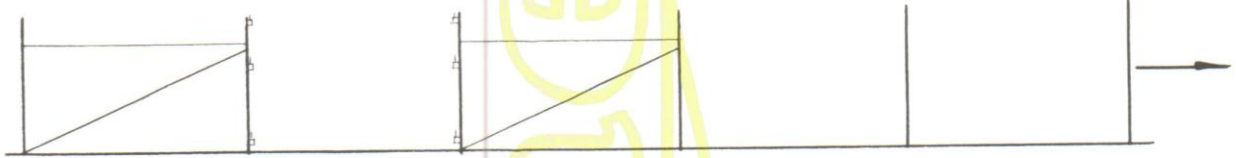
- 1 post cap
- 1 centre band for brace rail.
- 1 split selvage clip for spiral wire along bottom.

FITTINGS FOR INDUSTRIAL FENCE POSTS

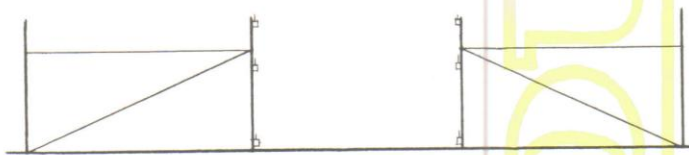


GATEWAY IN FENCE-LINE

Arrows indicate direction in which fence-line continues.

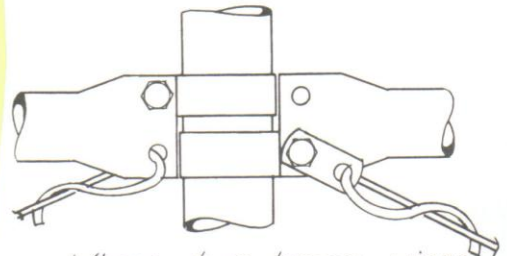
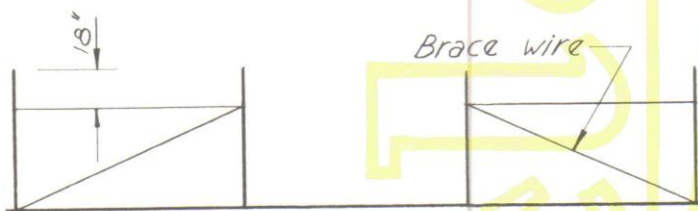


GATEWAY NEAR END OF FENCE-LINE



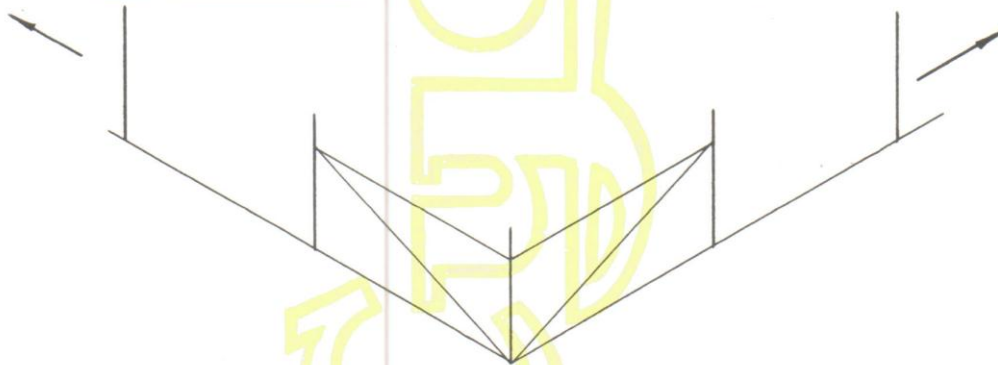
NOTE: The position in which the brace wire is fitted, this is very important

GATEWAY IN SHORT FENCE-LINE



Where two brace wires meet at one post in this manner, the above arrangement must be used

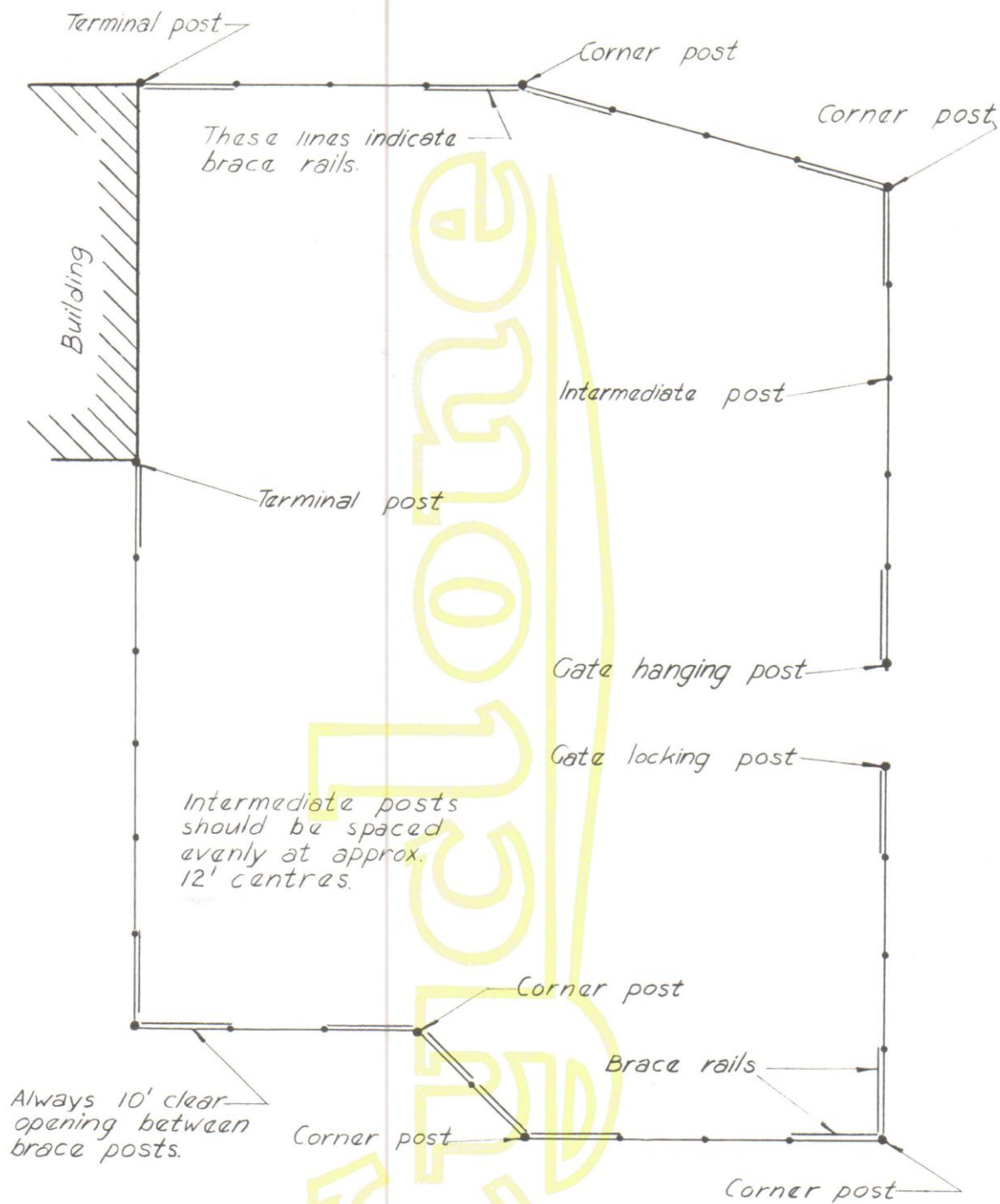
SHORT FENCELINE



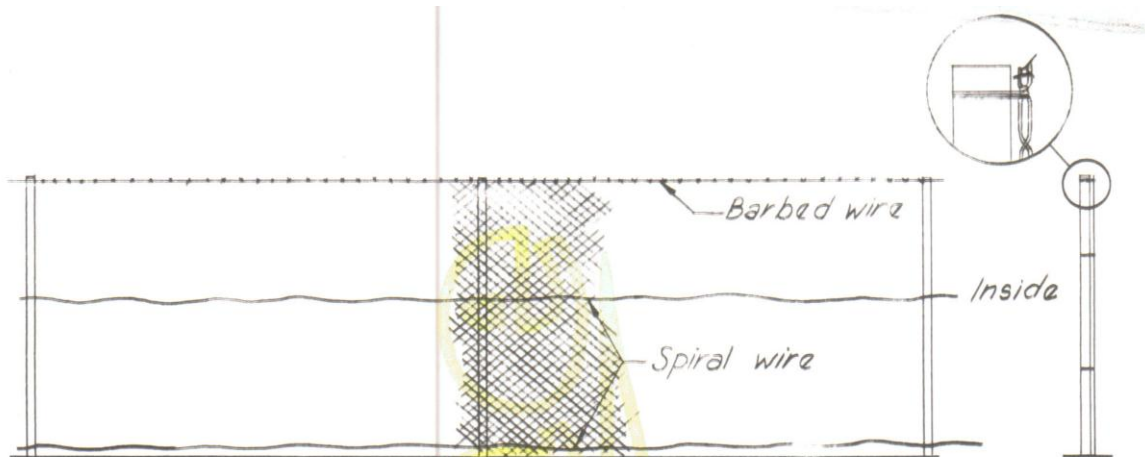
ARRANGEMENT AT CORNERS

or changes of direction

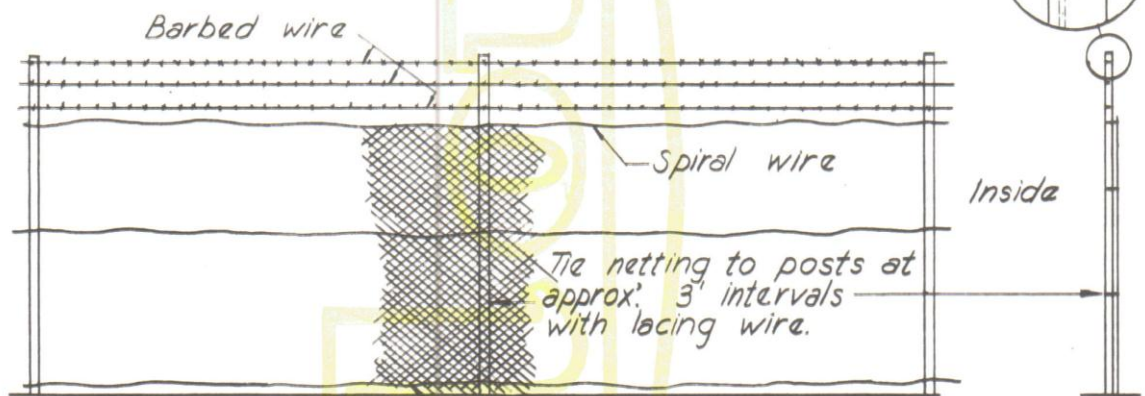
BRACING ARRANGEMENTS IN INDUSTRIAL FENCES



TYPICAL FENCE LAYOUT

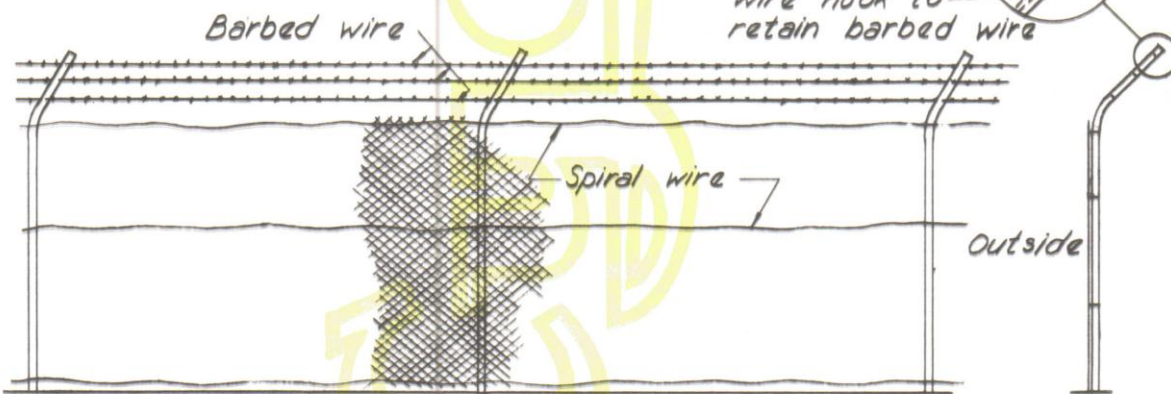


SAFETY FENCE



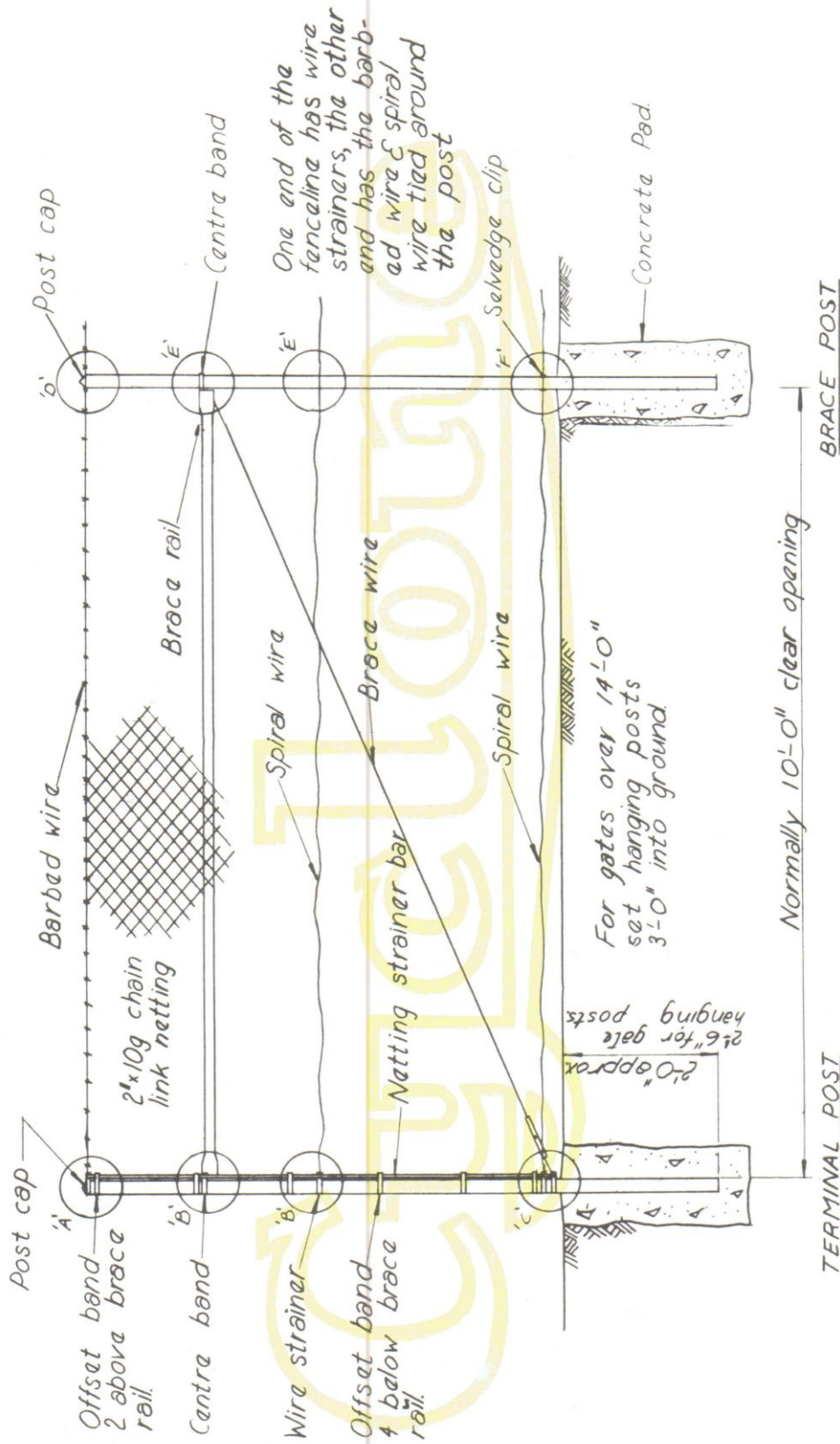
Tie spiral wire to netting at approx. 12" centres, with wire clips.

SECURITY FENCE



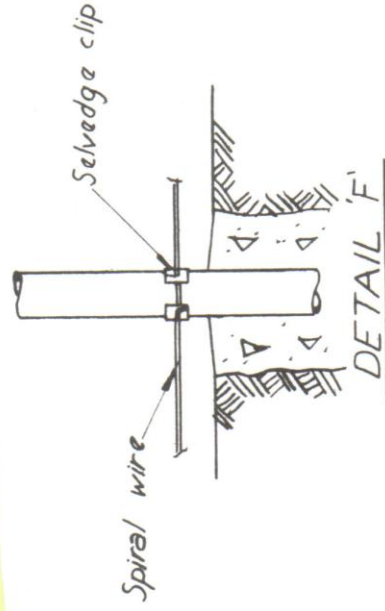
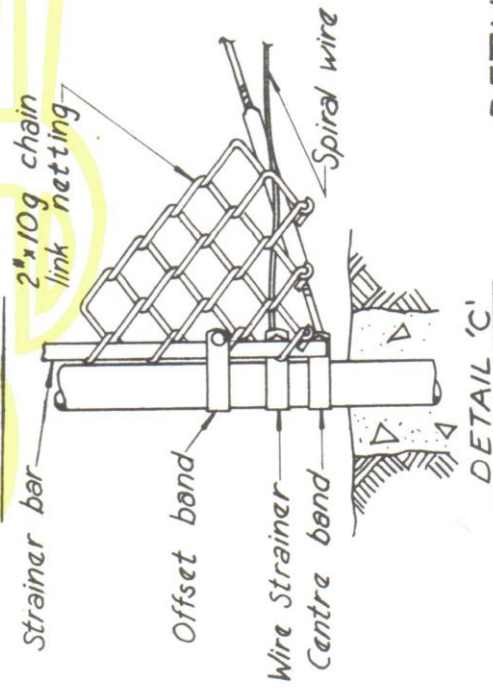
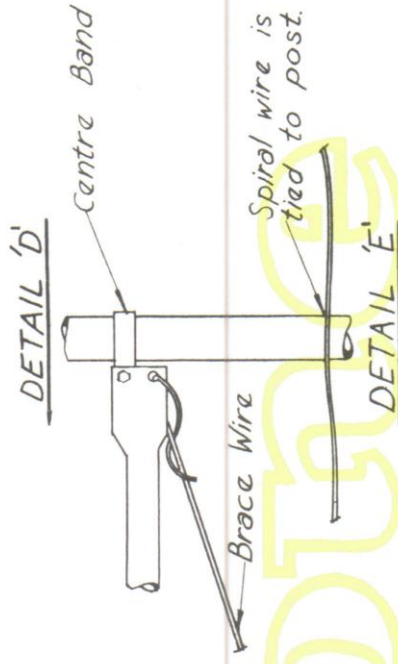
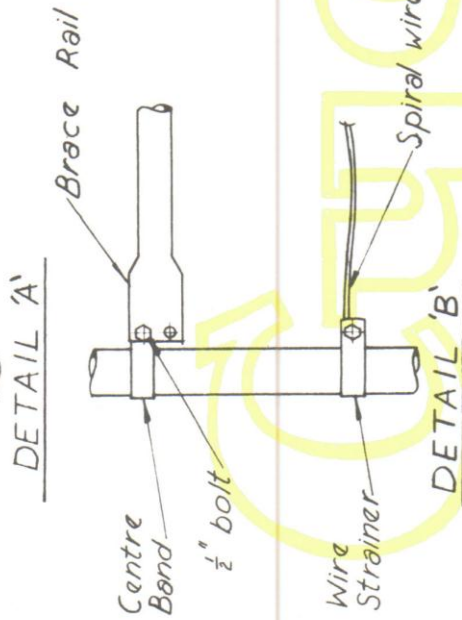
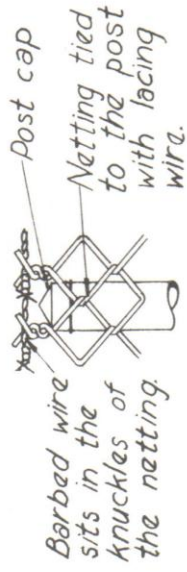
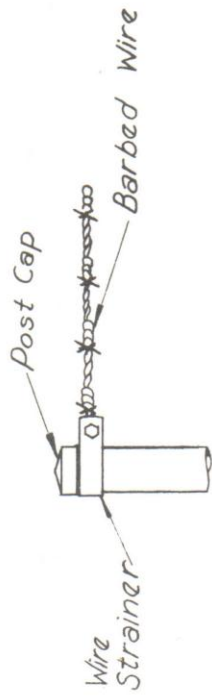
UNSCALEABLE FENCE

STANDARD INDUSTRIAL FENCES



TYPICAL BRACE PANEL OF FENCE

When erecting the fenceline, the height of the posts relative to one-another is important. The intermediate posts are set to suit the netting - normally 6' from ground to post tops. The tops of terminal posts, corner posts, gate hanging & gate locking posts are 1 $\frac{3}{4}$ " above the top of the intermediate posts.



DETAILS FOR BRACE PANEL